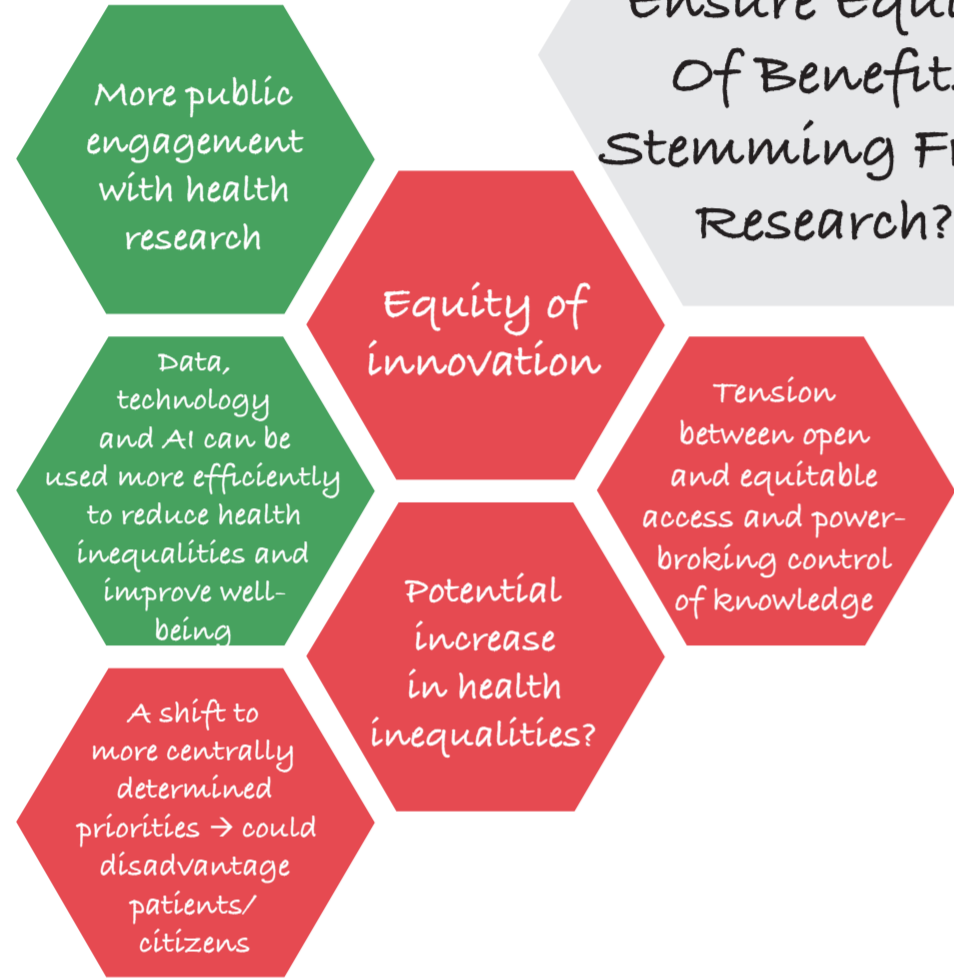


BEYOND THE HORIZON - WHAT WILL THE WORLD OF RESEARCH LOOK LIKE 10 YEARS FROM NOW?

Interactive Session Outcomes

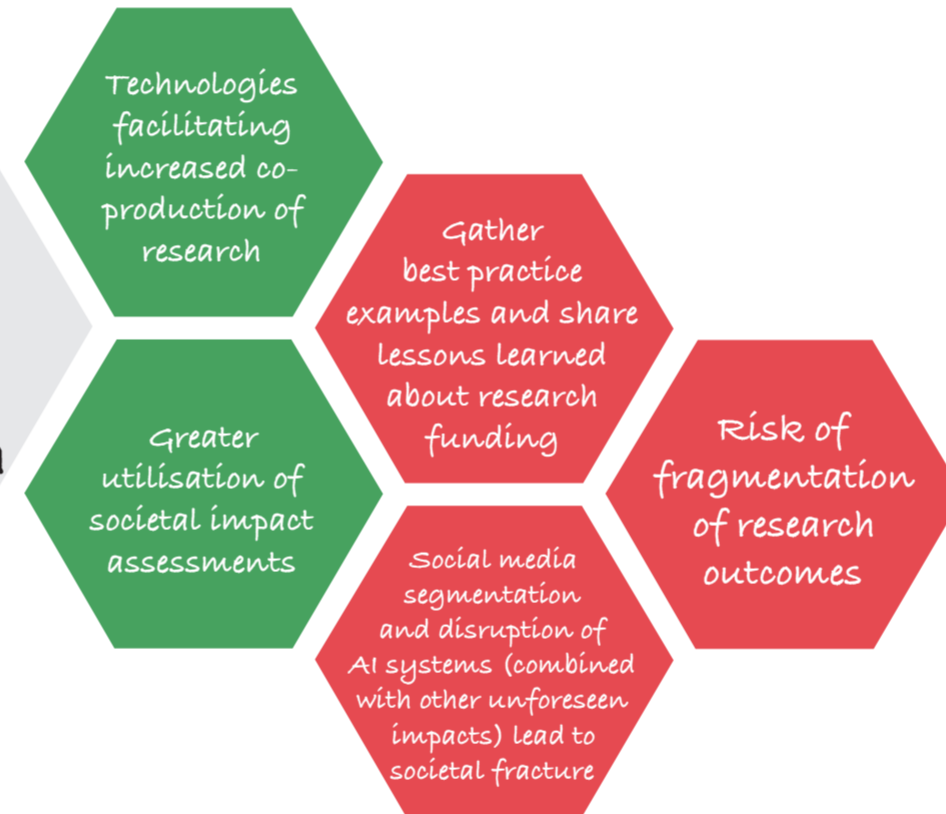
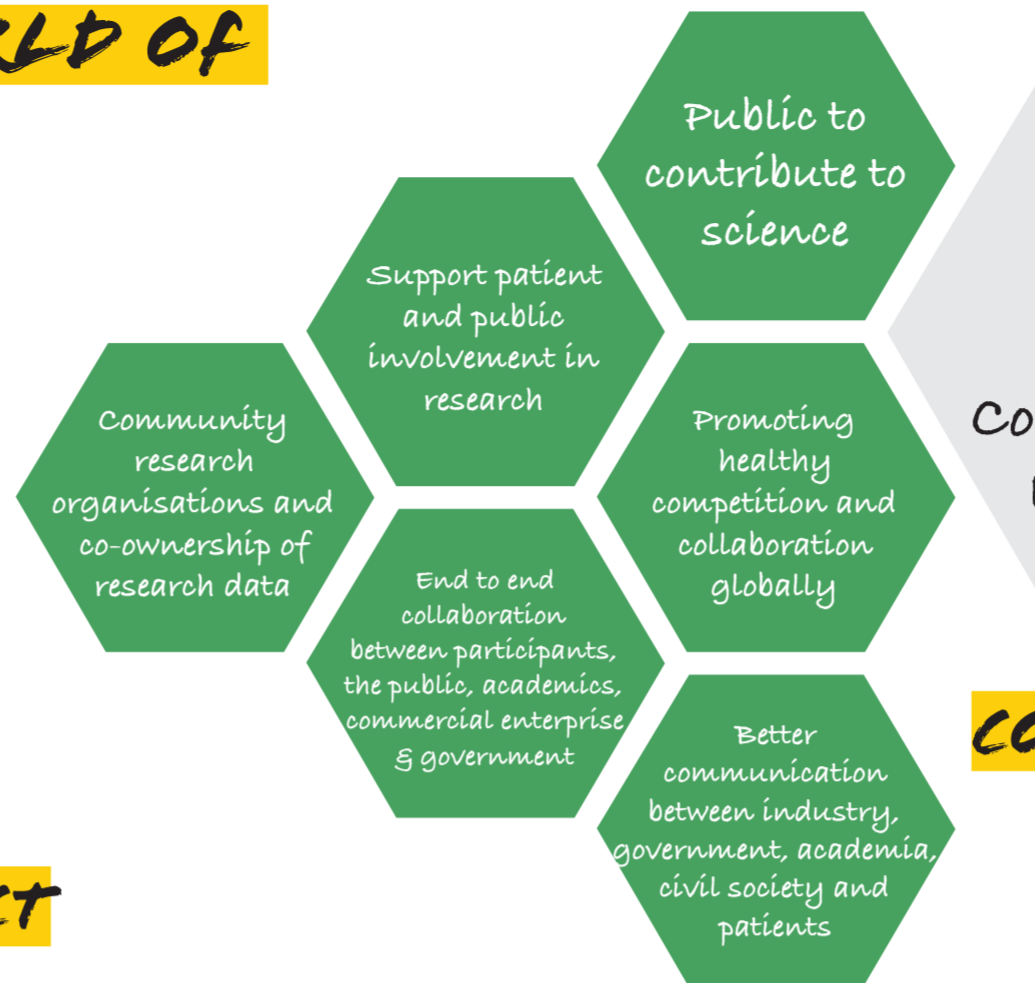
EQUITY

How Can We Ensure Equity Of Benefits Stemming From Research?



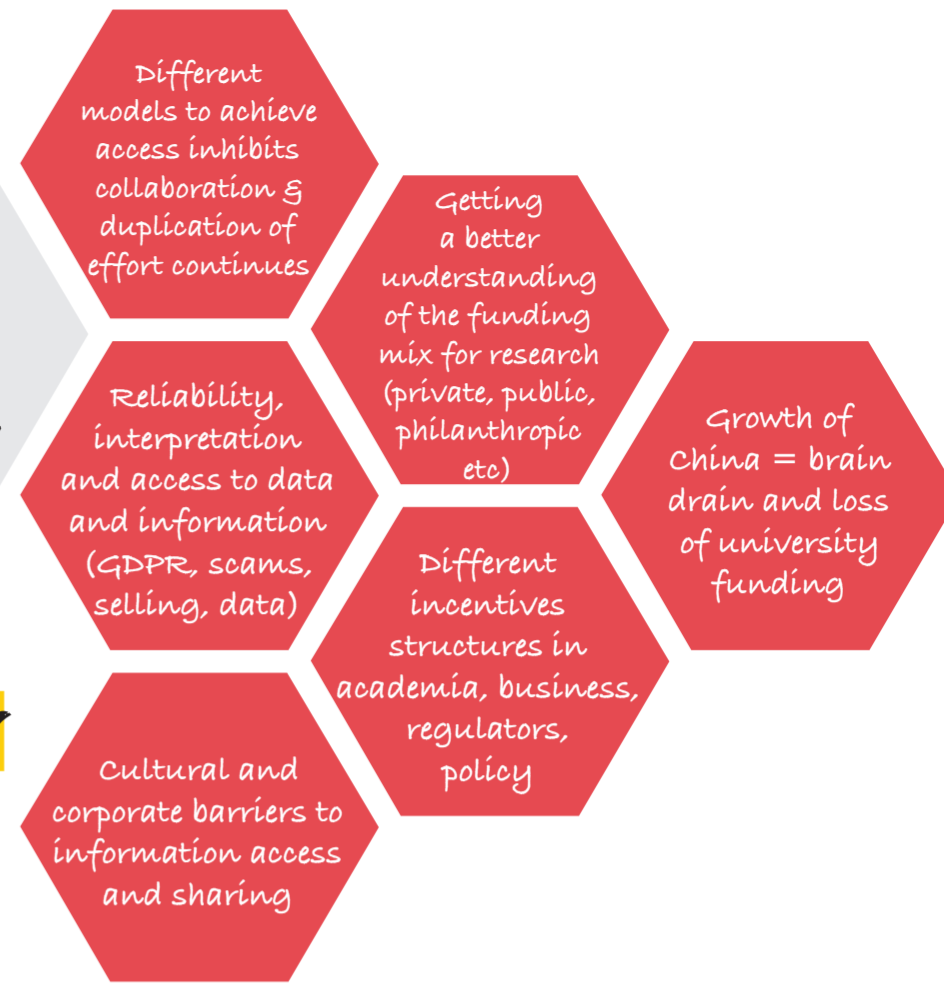
SOCIETAL IMPACT

What Measures Of Societal Impact Should Be A Priority In The Assessment Of Research And The Assessment Of Research Priorities?



COLLABORATION

How Do we Promote Collaboration When There Are Conflicting Interests In A Competitive Environment?

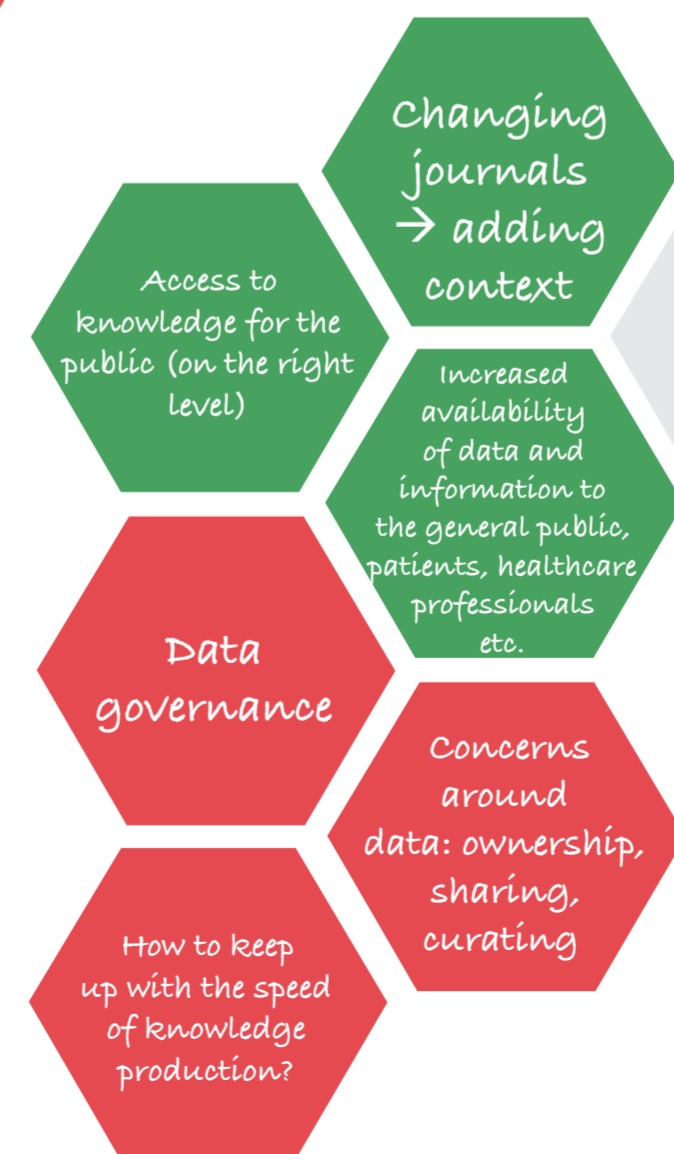


OPPORTUNITIES



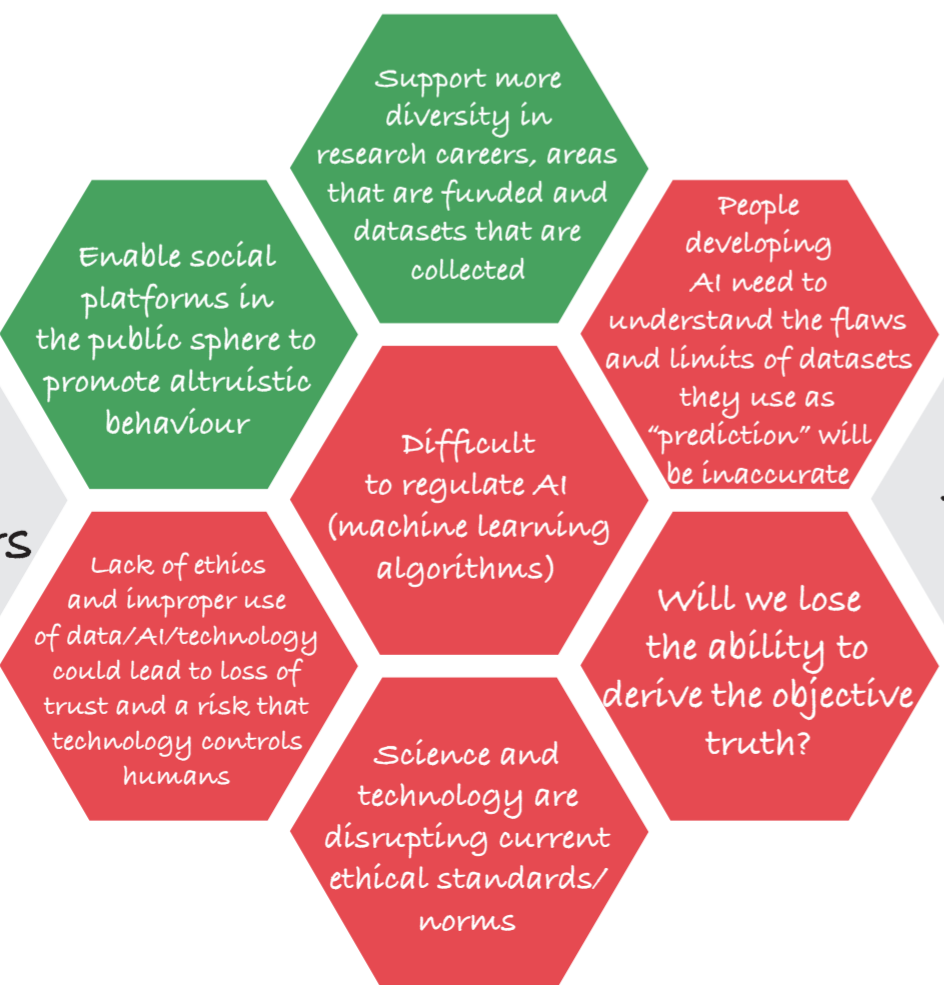
ACCESS TO KNOWLEDGE

Does Uncontrolled Access To Data Lead To More Useful Knowledge?



ETHICS

What Will Research Ethics Look Like 10 Years From Now?



TRUST

How Do We Regulate & Govern AI Systems To Incorporate Ethical Decision Making & Maintain Public Trust?



EUROPEAN HEALTH FORUM GASTEIN



ELSEVIER

BEYOND THE HORIZON - WHAT WILL THE WORLD OF RESEARCH LOOK LIKE 10 YEARS FROM NOW?

Key Takeaways

PUBLIC ENGAGEMENT & TRUST IN SCIENCE & RESEARCH



Will innovation be blocked due to risk averse beliefs and regulations?

Multi-disciplinary research focusing on the ethical, social & political challenges of AI is needed to address needs, maximise opportunities and minimise risks



We should recognise more than the individual "stellar" researcher and give credit to technicians, administrators and others who facilitate research

Collaboration is challenging... BUT there are good examples where SMEs, academia and industry have come together to accelerate innovation and change



EUROPEAN HEALTH FORUM GASTEIN



ELSEVIER

What will research ethics look like 10 years from now?

How can we ensure equity of benefits stemming from research?

How do we regulate & govern AI systems to incorporate ethical decision-making & engender public trust?

I want to engage, but who can I trust?



We need to make sure that whatever the future, patients and populations are included in the decision-making

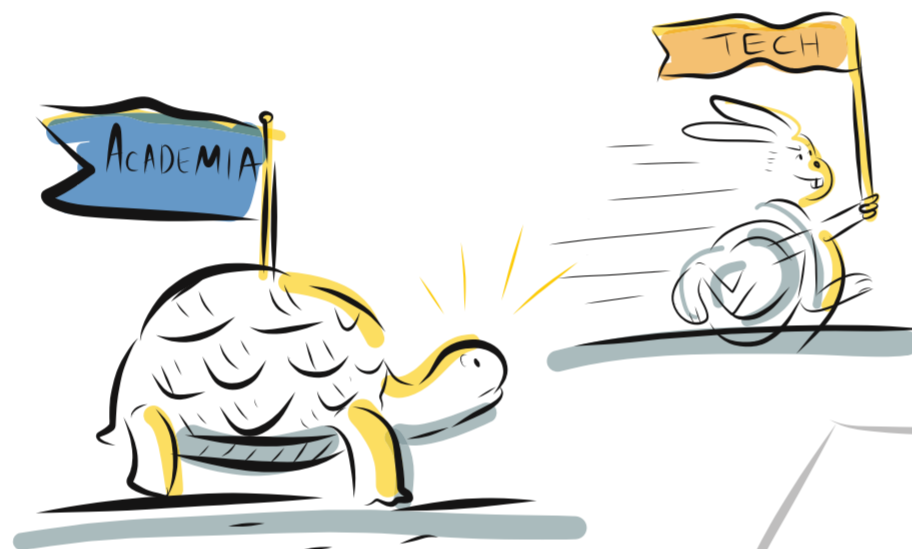
Diversity and inclusion must drive research going forward

How Do we Promote Collaboration When There Are Conflicting Interests In a Competitive Environment?

We should recognise more than the individual "stellar" researcher and give credit to technicians, administrators and others who facilitate research

PAST AND FUTURE: A DECADE AGO AND 10 YEARS FROM NOW

How much can change in ten years?



How good are we at predicting the future?



THE VALUE OF RESEARCH IN AND OF ITSELF

Think about what kind of future you want and work back to identify suitable impact measures for research

Does uncontrolled access to data lead to more useful knowledge?

What measures of societal impact should be a priority in the assessment of research and the assessment of research priorities?

Don't forget impact on culture and other social benefits from pure knowledge and blue skies research

EU research funding focuses on economic growth and jobs creation



ELSEVIER