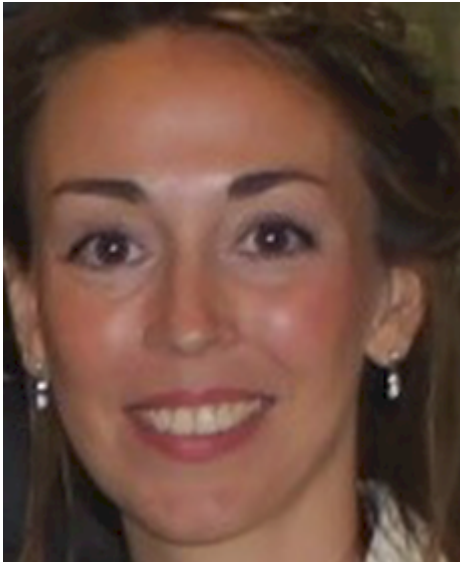


**Jané-Llopis, Eva**

ESADE Business School



Eva Jané Llopis is Director of Health and SDGs at ESADE Business School, Barcelona, leading research and executive education on sustainability and health care management, including mental health and addictions. She is Senior Associate Professor at the School of Public Health, Maastricht University, The Netherlands. She has over 20 years' international experience working with executives and senior public sector officials. As Director of Health Programmes at the World Economic Forum, she developed public-private partnerships and high-level dialogues on a range of health challenges. At WHO Europe, she led the Mental Health Action Plan promotion and prevention across Europe. At PAHO was senior advisor to advance Non-Communicable Diseases (NCDs) in Latin America. Advisor to international organizations WHO, EC (e.g., member of the EC High-Level Platform on SDGs), has been keynote at Ministerial conferences, EU Parliament, EU Presidencies and Inter/National Scientific Conferences. She has raised over €20 million in research funding developing evidence, social and economic impacts, guidelines, process evaluations, executive dialogues and partnership work across Europe, India, East Asia and Latin America. She has over 75 publications in books and peer-reviewed journals, a PhD in Social Sciences, a Master in Global Leadership, and continued executive education in management by leading business schools.